



Built-in Accelerometer and Digital Compass

Built-in accelerometer and digital compass improves accuracy by precisely identifying cant and angles.



Compass



Msensor

Model



FL 25R



FH 25R

Model	FL 25R	FH 25R
Detector Resolution	384x288	640x512
Pixel Size,	12	
Frame Rate, Hz	50	
Objective Lens, mm	25	
Field of View	10.5°x7.9°	17.5°x14.0°
Display Resolution	1280x960 LCOS	
Laser Rangefinder Range, m	Max 600±1	
WiFi		
Recorder, G	16	
Compass & Msensor		
E-zoom	x1 x2 x3 x4	
Max. Battery Life, h	6	
Dimension, mm	70x52x130	
Weight, g	320	
Detection Range, m (Target size: 1.7 m×0.5 m, P(n) = 99%)	1298	



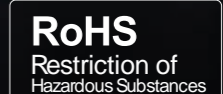
Finder Series

The Finder series products are light and easy to carry, especially suitable for one-handed operation that can be put in a pocket anytime and anywhere. The compact design makes the Finder the best choice for outdoor investigation.



www.infiray.se

FL25R / FH25R





IP66

Waterproof Rated

IP66 waterproof rating is used for protection from heavy rainfall, snow or other situations.



Integrated Laser Rangefinder

600 m

The Finder series has a built-in laser ranging module, which helps to quickly and accurately capture and display the target distance. The ranging accuracy is ± 1 m and the maximum ranging distance is 600 m. It provides both single ranging and continuous ranging modes. Continuous ranging can be quickly activated to adapt to the constantly changing distance of the observed object.



High Image Quality

The advanced image processing ability of the InfiRay detector, which has high performance electronics and optimized infrared optics, creates excellent image clarity and provides better detection and classification, both in day and night.

Long Detection Range

1298 m

The powerful objective lens combined with a 12 m professional grade thermal imaging sensor provides exceptional detection capabilities.



12 μ m

Thermal Imaging Sensor

High performance 12 m pixel pitch detectors are embedded.

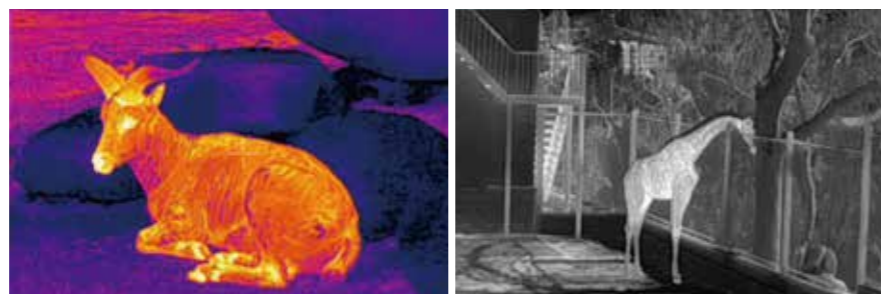
High Image Frequency

50 Hz

The 50 Hz refresh rate guarantees that you will capture every moment that you are interested in.

HD Micro Display

1280x960 high-resolution internal display offers sharp image and vivid colors.

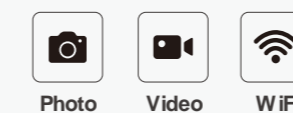


Pocket Machine

The compact size and light weight makes it easy to carry and operate with one hand. It can be put into the pocket anytime and anywhere. The Finder weighs only 320 g , which is lighter than conventional rangefinders, but much more powerful.

Built-in Video Recorder and WiFi Connection

16 GB internal storage provides 24 hours of video recording capability, or approximately 20,000 images of photo storage. WiFi mode allows for up to 4 connections simultaneously.



Infrared Sensor Switch

By sensing the reflection, the infrared sensor switch control the display on and off automatically which saves energy and extends the device's operation time. It also has the advantage of high sensitivity, strong anti-interference ability and stable working performance.